



Enanta
Pharmaceuticals
Great Chemistry Cures

SPRINT Phase 2 Study of EDP-235: Topline Results

May 8, 2023

Forward Looking Statements Disclaimer

This presentation contains forward-looking statements concerning our business, operations and financial performance and condition, as well as our plans, objectives and expectations for our research and development programs, our business and the industry in which we operate. Any statements contained herein that are not statements of historical facts may be deemed to be forward-looking statements. In some cases, you can identify forward-looking statements by terminology such as “aim,” “anticipate,” “assume,” “believe,” “contemplate,” “continue,” “could,” “due,” “estimate,” “expect,” “goal,” “intend,” “may,” “objective,” “plan,” “predict,” “potential,” “positioned,” “seek,” “should,” “target,” “will,” “would,” and other similar expressions that are predictions of or indicate future events and future trends, as well as other comparable terminology. These forward-looking statements include, but are not limited to, statements about overall trends, royalty revenue trends, research and clinical development plans and prospects, liquidity and capital needs and other statements of expectations, beliefs, future plans and strategies, anticipated events or trends, and similar expressions. These forward-looking statements are based on our management’s current expectations, estimates, forecasts and projections about our business and the industry in which we operate and our management’s beliefs and assumptions. These forward-looking statements are not guarantees of future performance or results and involve known and unknown risks, uncertainties and other factors that are in some cases beyond our control. As a result, any or all of our forward-looking statements in this presentation may turn out to be inaccurate.

Please refer to the risk factors described or referred to in “Risk Factors” in Enanta’s most recent Annual Report on Form 10-K, and other periodic reports filed with the Securities and Exchange Commission. Enanta cautions investors not to place undue reliance on the forward-looking statements contained in this presentation. These statements speak only as of the date of this presentation, and Enanta undertakes no obligation to update or revise these statements, except as may be required by law.

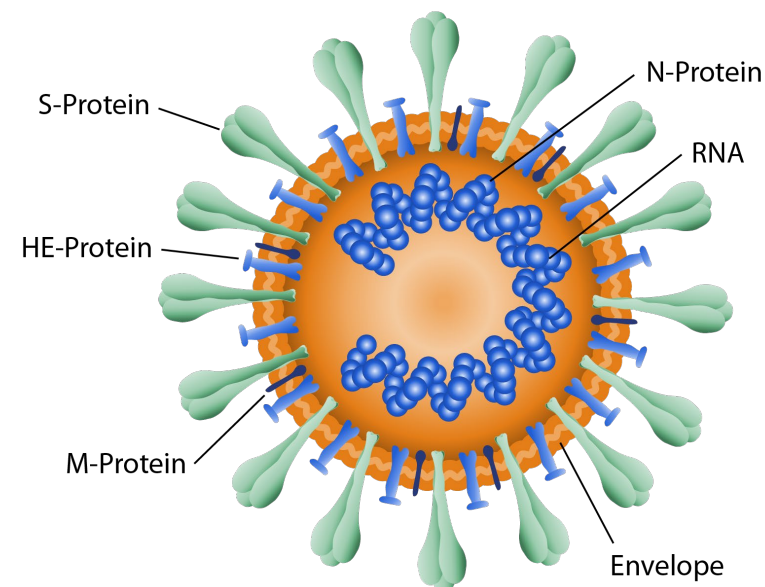
Enanta Pipeline

PRODUCT CANDIDATE			DISCOVERY	PRECLINICAL	PHASE 1	PHASE 2	PHASE 3	MARKET
Virology: Liver	HCV	Protease Inhibitor	Glecaprevir*					
	HBV	Core Inhibitor	EDP-514					
Virology: Respiratory	RSV	N-Protein Inhibitor	EDP-938					
			EDP-938					
			EDP-938					
	Dual hMPV/RSV	Non-Fusion Inhibitor	EDP-323					
			EDP-235					
			PL Protease Inhibitor					
For Out-license	NASH	FXR Agonists	EDP-305 (Phase 2), EDP-297 (Phase 1)					

*Fixed-dose antiviral combination contains glecaprevir and AbbVie's NS5A inhibitor, pibrentasvir. Marketed by AbbVie as MAVYRET® (U.S.) and MAVIRET® (ex-U.S.). © 2023 Enanta Pharmaceuticals, Inc. | 3

EDP-235: Oral Protease Inhibitor Designed for COVID-19

- Novel, oral, direct-acting antiviral specifically designed to target the SARS-CoV-2 3CL protease
- Potent and selective inhibition of SARS-CoV-2 3CLpro enzyme
 - Potent inhibition in multiple cellular models
- Potent against SARS-CoV-2 variants, including Omicron variants
- Preclinically active against other human coronaviruses
- High barrier to resistance preclinically
- Good target tissue distribution (e.g. lung to plasma AUC ratio >4)
- Robust treatment effect & prevention of transmission in ferret model
- Phase 1 supported 200 or 400mg once-daily as safe & efficacious dose
 - Plasma drug levels 7-13x higher than the EC90, without ritonavir boosting
- Phase 2 study (SPRINT) data presented in May



EDP-235 Profile Suggests Potential for Best-in-Class Antiviral Treatment for SARS-CoV-2 Infection



Preclinical Properties		EDP-235 ¹	Nirmatrelvir ²	Pomotrelvir ³	Ensitrelvir ⁴
Mechanism		Protease	Protease	Protease	Protease
Potency (nM)*	Enzyme IC ₅₀	5.8	19	24	13
	Vero Cell EC ₅₀	5.1	75	345	69 (Delta)
	Vero Cell EC ₉₀	11	155	598	n/a
Oral Bioavailability ⁷		95%	34 – 50%	n/a	97%
Lung Penetration ⁸		4.1	0.8 ⁹	~1	0.7 ⁹
Projected Efficacious Dose		200 or 400mg QD	300mg/100mg ritonavir BID	700mg BID	375mg (D1)/125mg (D2-5) QD

Molnupiravir ⁵	Bemnifosbuvir ⁶
Polymerase	Polymerase
n/a	n/a
1410**	n/a
n/a	470*** (In pHAEc)
36 – 56%	n/a
1.8	0.8
800mg Q12h	550mg BID

1. Jiang et al., ISIRV Poster #120, Oct 19, 2021

2. Owen et al., *Science* November 2021; Owen et al. ACS Spring 2021 meeting; EUA fact sheet for healthcare providers

3. Pardes [CHI New Antiviral Conference presentation](#) Oct 19, 2022. Pardes [2022 10K](#), March 2023

4. Tachibana, et al., ISIRV oral presentation, Oct 20, 2021; Unoh, et al., bioRxiv 2022; Sasaki, et al., bioRxiv 2022; Yotsuyanagi, et al., ECCMID oral presentation, Apr 24, 2022

5. Grobler et al., ID Week 2021, [Poster 543](#); Painter et al., Antiviral Research Nov 2019

6. Good et al., AAC, 2021; Atea 2Q2021 earnings presentation; Atea 1Q2022 earnings presentation; Atea 2Q2022 earnings presentation

7. Oral bioavailability in rats for EDP-235, nirmatrelvir, and ensitrelvir; in mice for molnupiravir

8. AUC lung to plasma ratio in rats (EDP-235, nirmatrelvir, ensitrelvir), mice (molnupiravir); C12 lung to plasma ratio in humans for AT-527

9. Data for nirmatrelvir and ensitrelvir generated by Enanta

*All potency values versus ancestral (A) lineage unless indicated

**Data from N-hydroxycytidine (NHC): molnupiravir is prodrug of NHC

***Data from AT-511 (AT-527 is the hemi-sulfate salt of AT-511)
pHAEc: primary human airway epithelial cells
n/a: not available

SPRINT Phase 2 Study of EDP-235: Topline Results

A Phase 2, Randomized, Double-Blind, Placebo-Controlled, Parallel Group Study to Evaluate the Effects of EDP-235 in Non-hospitalized Adults with Mild or Moderate COVID-19



Enanta
Pharmaceuticals

SPRINT Topline Results: Conclusions

Safety

- EDP-235 was generally safe and well tolerated
- Low frequency of adverse events; most were mild in severity
 - 1.3%, 6.4%, and 2.6% in the EDP-235 200mg, 400mg and placebo arms
- No serious adverse events or discontinuations due to adverse events

Clinical Symptoms

- Statistically significant improvement in total symptom score (TSS) achieved at multiple timepoints for EDP-235 400mg
 - Patients enrolled within 3 days of symptom onset showed a statistically significant improvement in TSS for EDP-235 400mg at all time points
- No difference in time to 14 symptom improvement for EDP-235 compared with placebo
 - EDP-235 400mg significantly reduced duration of 6 symptom subset by 2-days compared to placebo in patients enrolled within 3 days of symptom onset

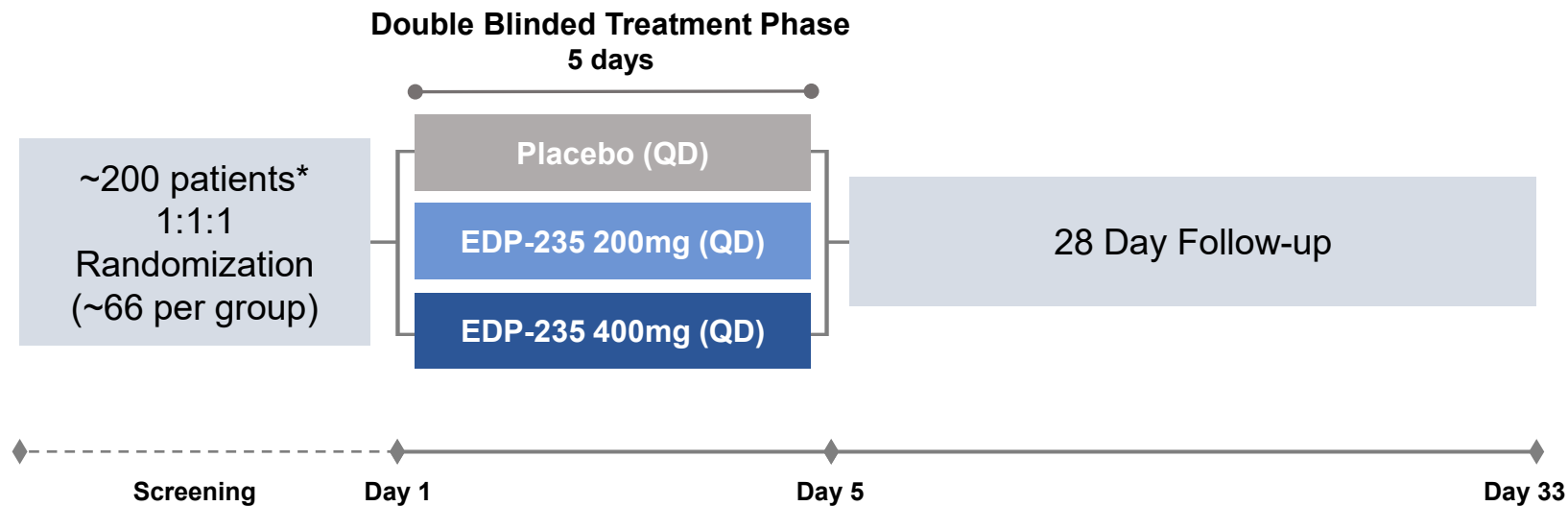
Virology

- No difference between treatment arms and placebo for viral RNA decline
 - Additional analysis of patients with baseline viral load >5 log showed decline of 0.4 log at day 3 with EDP-235 compared to placebo
- Rapid decline in nasal viral RNA observed in all study arms, indicating this is a highly immune population

SPRINT: SARS-CoV-2 PRotease INhibitor Treatment

Phase 2 Study for EDP-235 in Non-hospitalized Standard Risk Patients

SPRINT

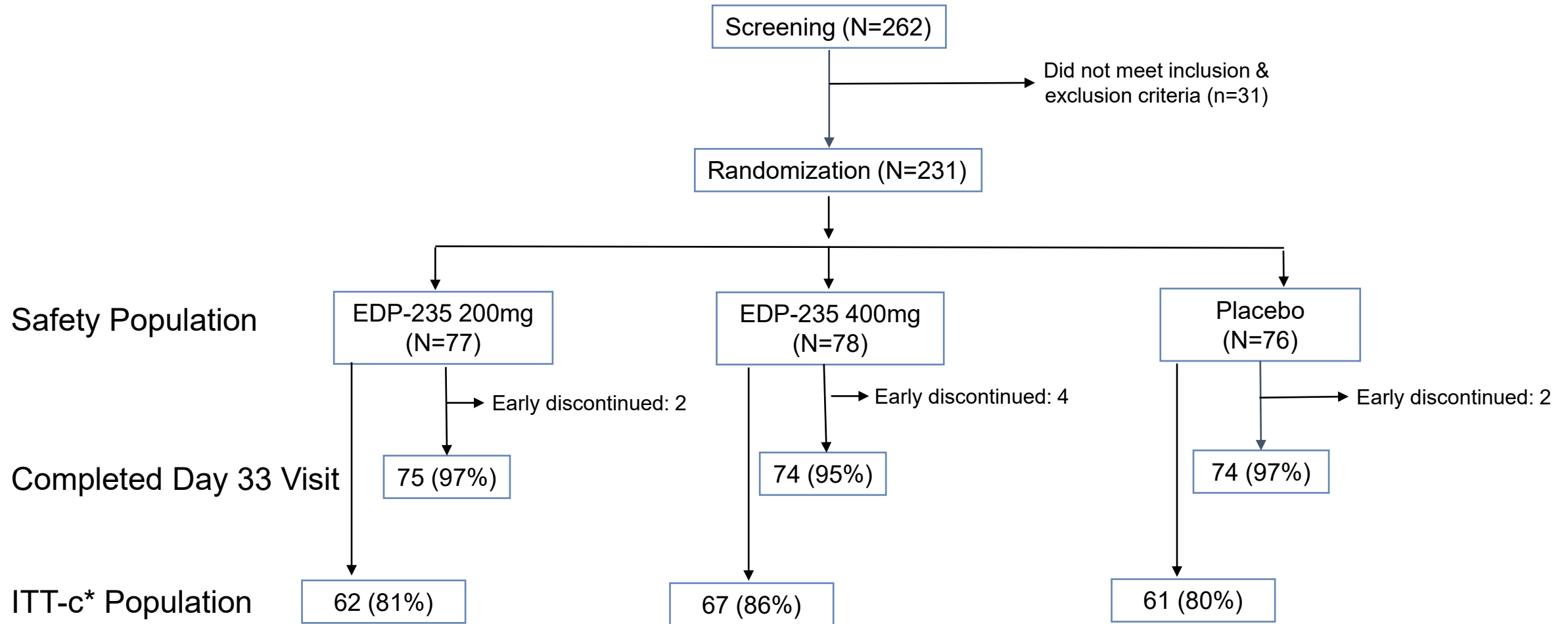


- **Primary Objective:**
Evaluation of safety and tolerability
- **Secondary Objectives:**
Evaluation of virologic endpoints, clinical symptoms and outcomes, and pharmacokinetics

Eligibility Criteria:

- Non-hospitalized adults who are not at increased risk for developing severe disease
- Initial onset of symptoms within 5 days of randomization
- At least 2 COVID-19 symptoms with one of at least moderate severity
- Have not been vaccinated or infected with SARS-CoV-2 less than 90 days of enrollment

SPRINT: Patient Disposition



SPRINT: Demographics and Baseline Characteristics

Safety Population

- Demographics and baseline characteristics were well balanced between the arms.
- Majority were White, Hispanic, young, enrolled within 3 days of symptom onset, and seropositive

Parameter	EDP-235 200mg (N=77)	EDP-235 400mg (N=78)	Placebo (N=76)
Age – years Median (Range)	43.0 (19, 64)	46.0 (19, 64)	45.5 (19, 62)
18 to 50 years old – n (%)	50 (64.9)	51 (65.4)	51 (67.1)
Gender: Female – n (%)	50 (64.9)	47 (60.3)	42 (55.3)
Race: White – n (%)	73 (94.8)	75 (96.2)	70 (92.1)
Ethnicity: Hispanic/Latino – n (%)	74 (96.1)	73 (93.6)	71 (93.4)
BMI – kg/m ² Median (Range)	24.9 (17.0, 33.9)	24.9 (20.4, 38.5)	24.8 (18.8, 32.9)
Smoking History: Never – n (%)	76 (98.7)	75 (96.2)	74 (97.4)
COVID-19 Symptoms ≤ 3 Days – n (%)	57 (74.0)	56 (71.8)	56 (73.7)
COVID-19 Vaccination Status – n (%)			
Vaccinated	56 (72.7)	60 (76.9)	50 (65.8)
Serostatus: Seropositive – n (%)	74 (96.1)	75 (96.2)	73 (96.1)
Baseline Viral Load – log10 copies/mL, Mean	5.0	5.1	5.1

SPRINT: Summary of Treatment Emergent Adverse Events (TEAEs)

Safety Population

- Low frequency of treatment emergent adverse events; most were mild in severity
- No serious adverse events or discontinuations due to adverse events

	EDP-235 200mg (N=77) n (%)	EDP-235 400mg (N=78) n (%)	Placebo (N=76) n (%)
Total Number of Treatment-Emergent Adverse Events (TEAEs)	1	6	3
Number of Subjects With Any TEAEs	1 (1.3)	5 (6.4)	2 (2.6)
Number Of Subjects With Any Study Drug-Related TEAEs*	1 (1.3)	2 (2.6)	1 (1.3)
Number of Subjects With Any TEAEs of Grade 3 or Higher	0	1 (1.3)	0
Number of Subjects with Any TEAEs by Maximum Severity			
Mild (Grade 1)	1 (1.3)	4 (5.1)	1 (1.3)
Moderate (Grade 2)	0	0	1 (1.3)
Severe (Grade 3)	0	1 (1.3)	0
Life-threatening (Grade 4)	0	0	0
Death (Grade 5)	0	0	0
Number Of Subjects With Any TEAEs Leading to Study Drug Discontinuation	0	0	0
Number of Subjects With Any TEAE Leading to Study Discontinuation	0	0	0
Number Of Subjects With Any TEAEs Leading to Death	0	0	0
Number Of Subjects With Any Serious TEAEs	0	0	0
Number Of Subjects With Any Study Drug-Related Serious TEAEs*	0	0	0

*Study Drug-Related TEAEs are considered 'Related' if they are reported as either 'Possible' or 'Related.' If the relationship of an AE is missing, the AE is considered 'Related'.

SPRINT: Treatment-Emergent Adverse Events

Safety Population

- No specific pattern of TEAEs was identified

	EDP-235 200mg (N=77) n (%)	EDP-235 400mg (N=78) n (%)	Placebo (N=76) n (%)
Total Number of Treatment-Emergent Adverse Events	1	6	3
Number of Subjects With At Least One Treatment-Emergent Adverse Event	1 (1.3)	5 (6.4)	2 (2.6)
Preferred Term			
Hepatotoxicity	1 (1.3)	1 (1.3)	0
Periorbital oedema	0	1 (1.3)	0
Face oedema	0	1 (1.3)	0
Gastroenteritis	0	1 (1.3)	0
Fall	0	1 (1.3)	0
Hyperglycaemia	0	0	1 (1.3)
Hypertriglyceridaemia	0	0	1 (1.3)
Arthralgia	0	1 (1.3)	0
Dysgeusia	0	0	1 (1.3)

SPRINT: Laboratory Values

- Laboratory values were generally unremarkable
 - One subject receiving EDP-235 400mg who had concomitant use of alcohol and acetaminophen, experienced asymptomatic, transient elevation of ALT (grade 4), AST (grade 3) and GGT with normal bilirubin and alkaline phosphatase
 - Transient, dose dependent elevations in total cholesterol and triglycerides were seen with EDP-235 treatment, trending toward baseline after completion of treatment

SPRINT: Safety Summary

- EDP-235 was generally safe and well tolerated
- Low frequency of adverse events; most were mild in severity
 - 1.3% in EDP-235 200mg
 - 6.4% in EDP-235 400mg
 - 2.6% in Placebo
- No serious adverse events or discontinuations due to adverse events
- Laboratory values were generally unremarkable
 - One subject receiving EDP-235 400mg who had concomitant use of alcohol and acetaminophen, experienced asymptomatic, transient elevation of ALT (grade 4), AST (grade 3) and GGT with normal bilirubin and alkaline phosphatase
 - Transient, dose dependent elevations in total cholesterol and triglycerides were seen with EDP-235 treatment, trending toward baseline after completion of treatment

SPRINT: Pharmacokinetics Summary

- EDP-235 target exposures were achieved and consistent with Phase 1
- Plasma drug levels were 7x and 12x higher than the protein-adjusted EC₉₀ of Omicron for 200mg and 400mg, respectively

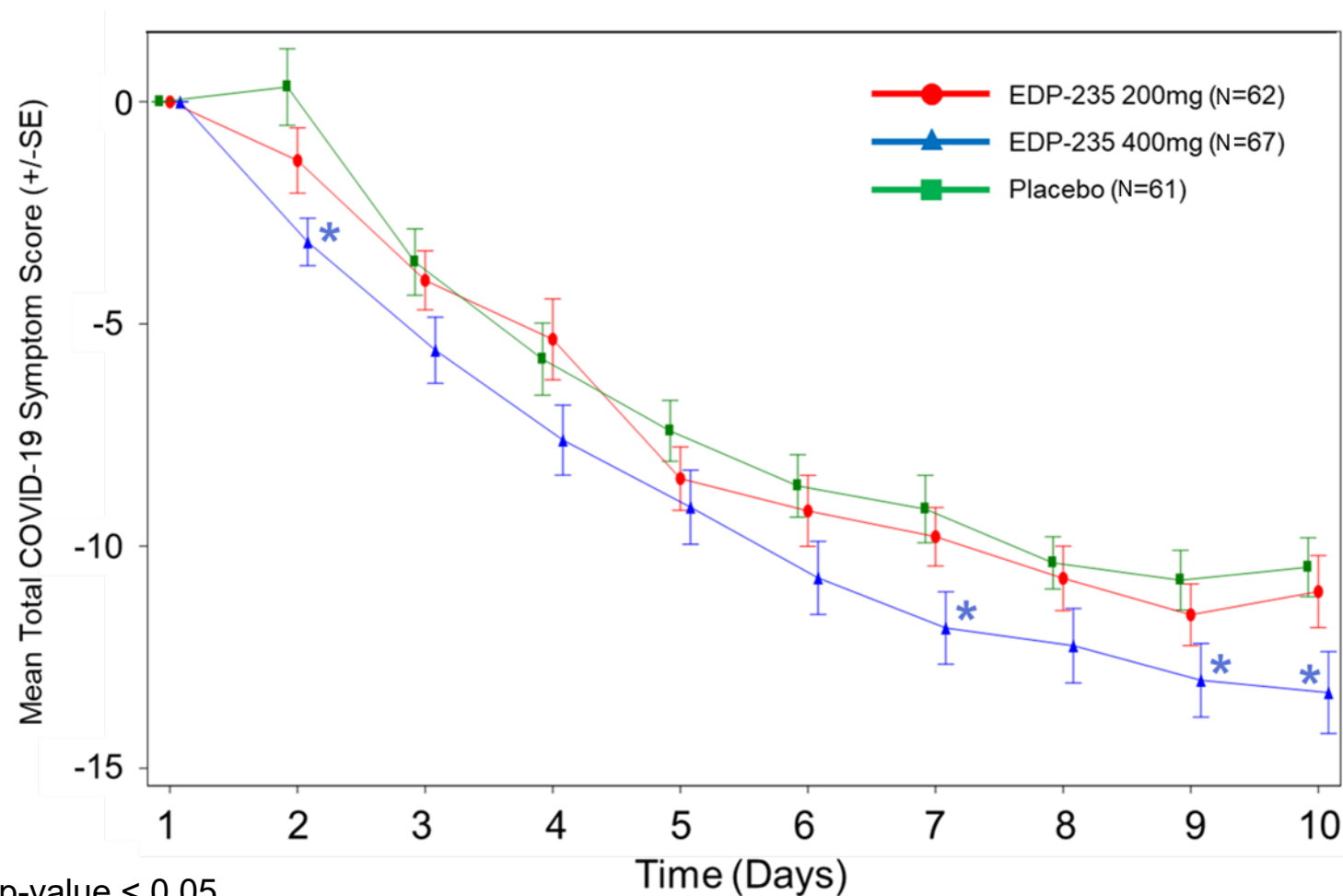
EDP-235 Predose concentration on Day 5 (ng/mL)

Dose	n	Mean	Median	% CV
200mg	66	1290	1080	78.5
400mg	73	2180	2230	69.1

Total Symptom Score (TSS): Change from Baseline

(ITT-c population within 5 days of symptom onset; all 14 FDA defined symptoms¹)

- Dose-dependent improvement in TSS for all 14 symptoms, with statistical significance achieved at multiple timepoints for EDP-235 400mg compared to placebo



¹COVID-19 Symptoms:

Respiratory: Cough, Shortness of Breath, Sore Throat, Stuffy or Runny Nose

Systemic: Chills or Shivering, Feeling Hot or Feverish, Headache, Low Energy or Tiredness, Muscle or Body Aches

Digestive: Nausea, Vomiting, Diarrhea

Other: Sense of Smell, Sense of Taste

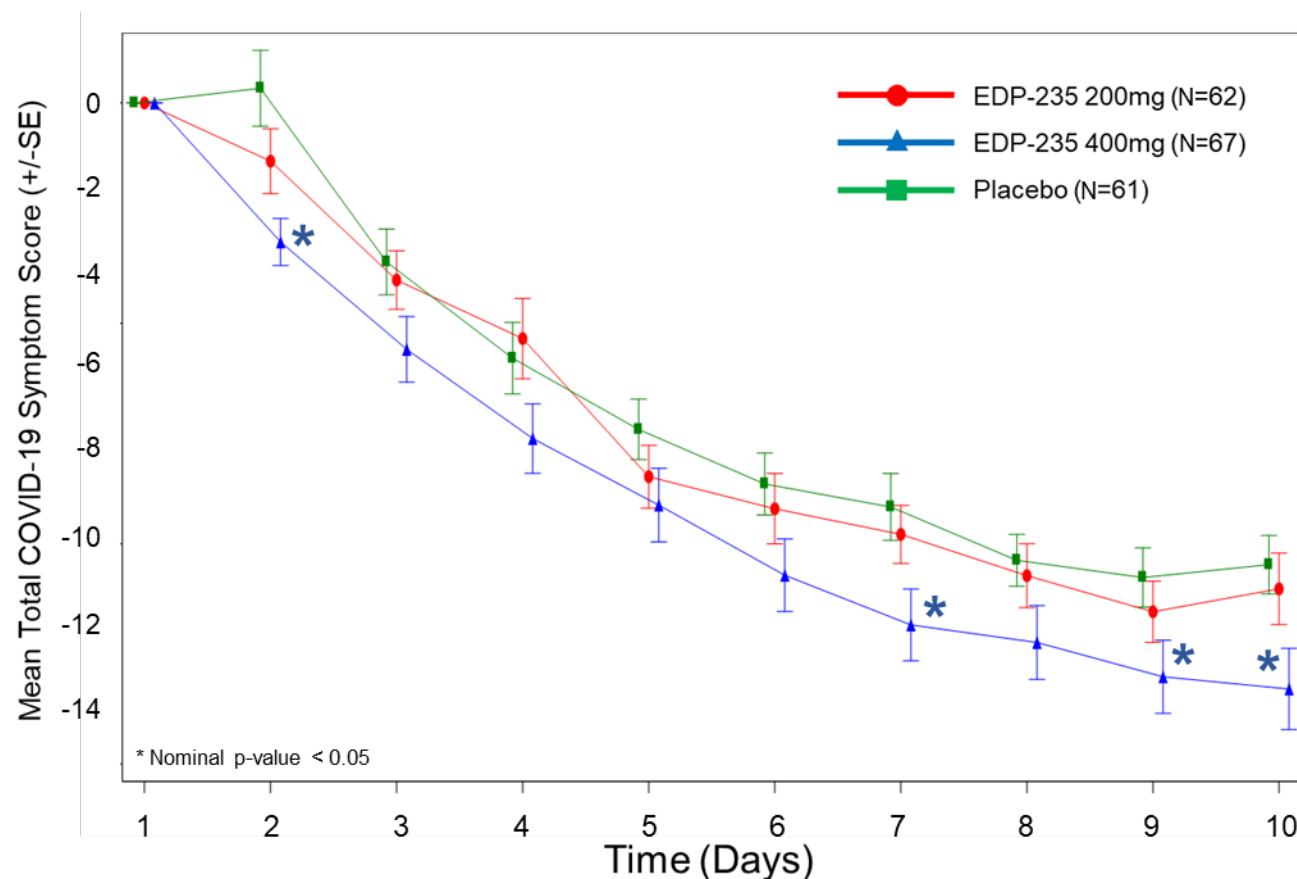
* Nominal p-value < 0.05

Total Symptom Score (TSS): Change from Baseline

(Population within 5 days of symptom onset)

SPRINT Phase 2 EDP-235

N=190, 14 symptoms



Symptoms:

Respiratory: Cough, Shortness of Breath, Sore Throat, Stuffy or Runny Nose

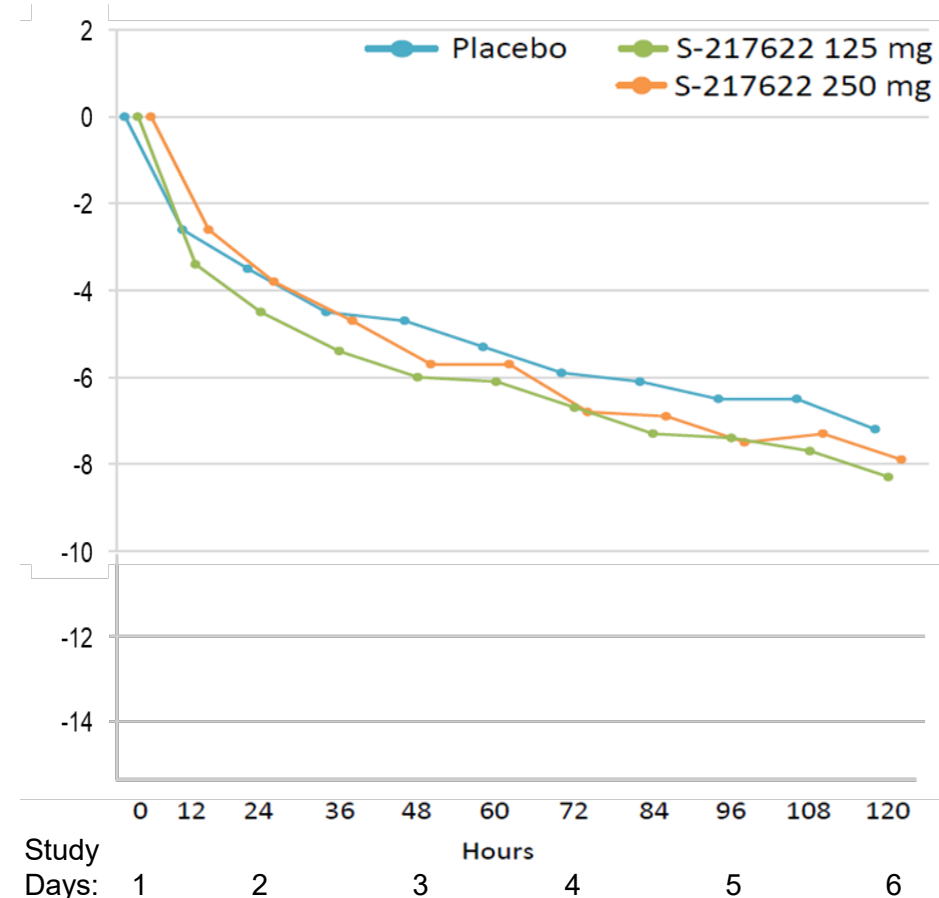
Systemic: Chills or Shivering, Feeling Hot or Feverish, Headache, Low Energy or Tiredness, Muscle or Body Aches

Digestive: Nausea, Vomiting, Diarrhea ;

Other: Sense of Taste, Sense of Smell (Enanta only)

Shionogi Phase 2b Ensitrelvir*

N=341, 12 symptoms

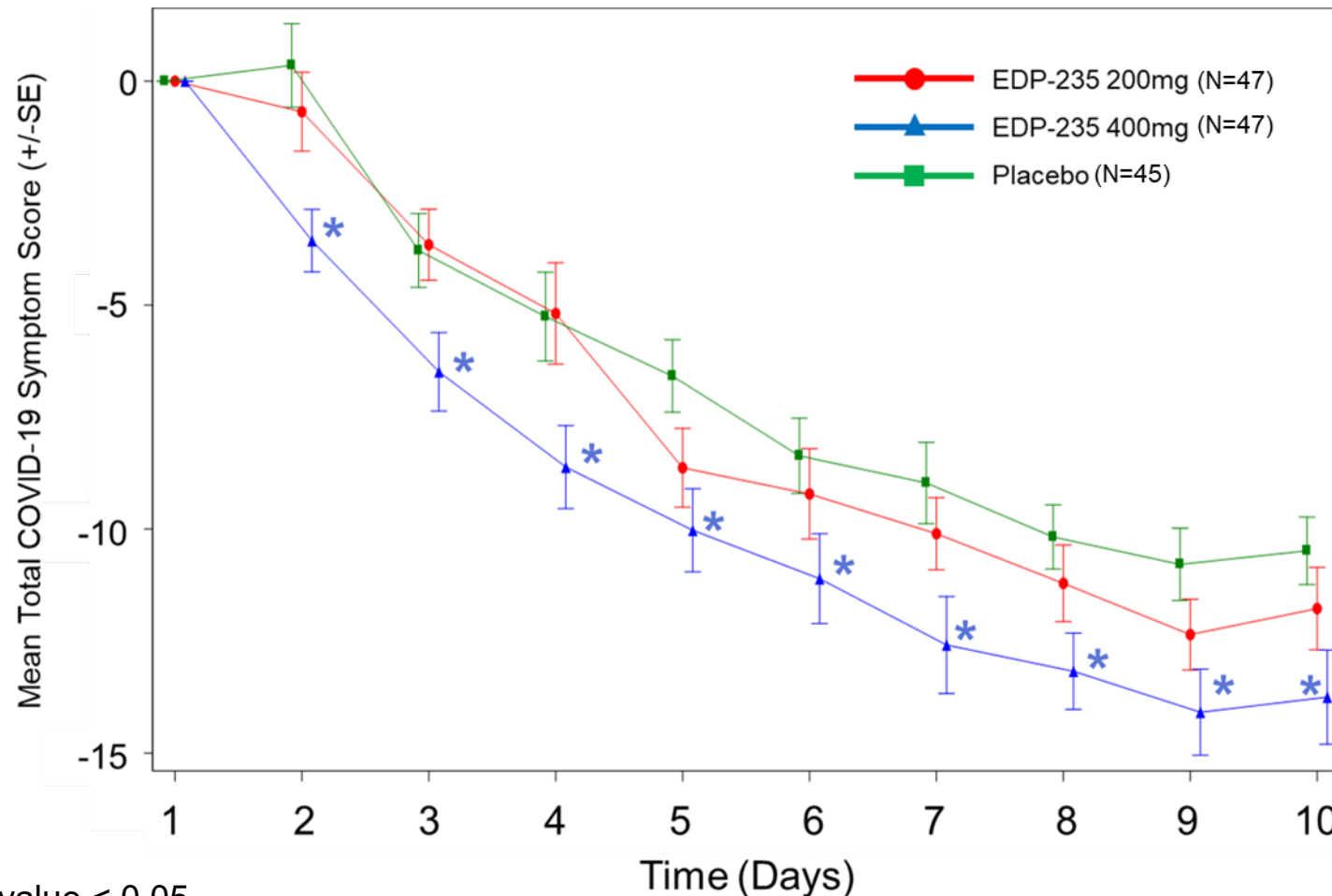


* ECCMID April 2022, Lisbon; Ohmagari et al, Phase 2b

Total Symptoms Score (TSS): Change from Baseline

(ITT-c population within 3 days of symptom onset; all 14 FDA defined symptoms¹)

- Prespecified population enrolled within 3 days of symptom onset showed a statistically significant improvement in TSS for all 14 symptoms for EDP-235 400mg compared to placebo at all time points



¹COVID-19 Symptoms:

Respiratory: Cough, Shortness of Breath, Sore Throat, Stuffy or Runny Nose

Systemic: Chills or Shivering, Feeling Hot or Feverish, Headache, Low Energy or Tiredness, Muscle or Body Aches

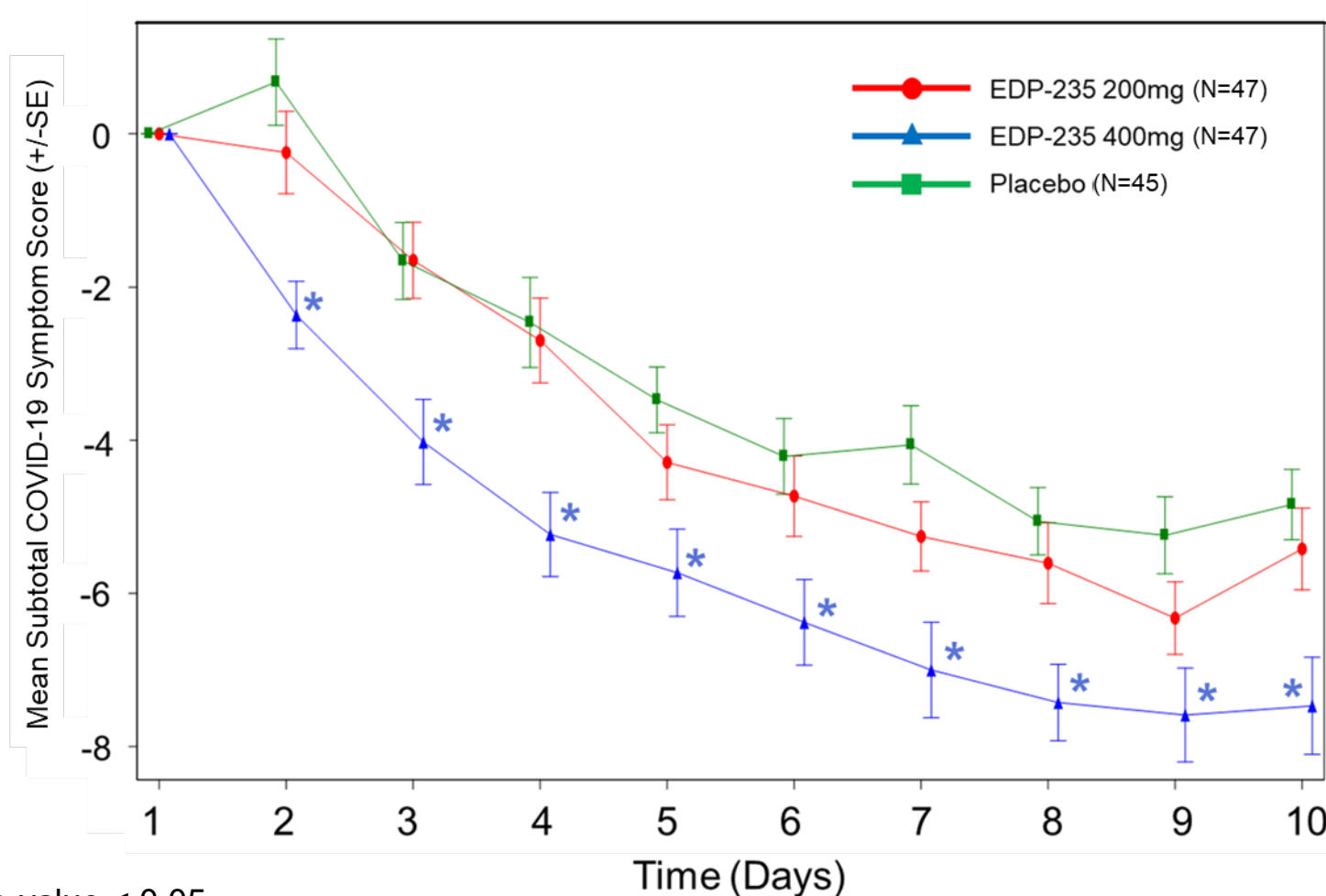
Digestive: Nausea, Vomiting, Diarrhea

Other: Sense of Smell, Sense of Taste

Subtotal Symptom Score: Change from Baseline

(ITT-c population within 3 days of symptom onset; 6 selected symptoms¹)

- Prespecified population enrolled within 3 days of symptom onset showed a statistically significant improvement in a subset of 6 symptoms for EDP-235 400mg compared to placebo at all time points



¹COVID-19 Selected Symptoms:

Respiratory: Shortness of Breath, Sore Throat, Stuffy or Runny Nose

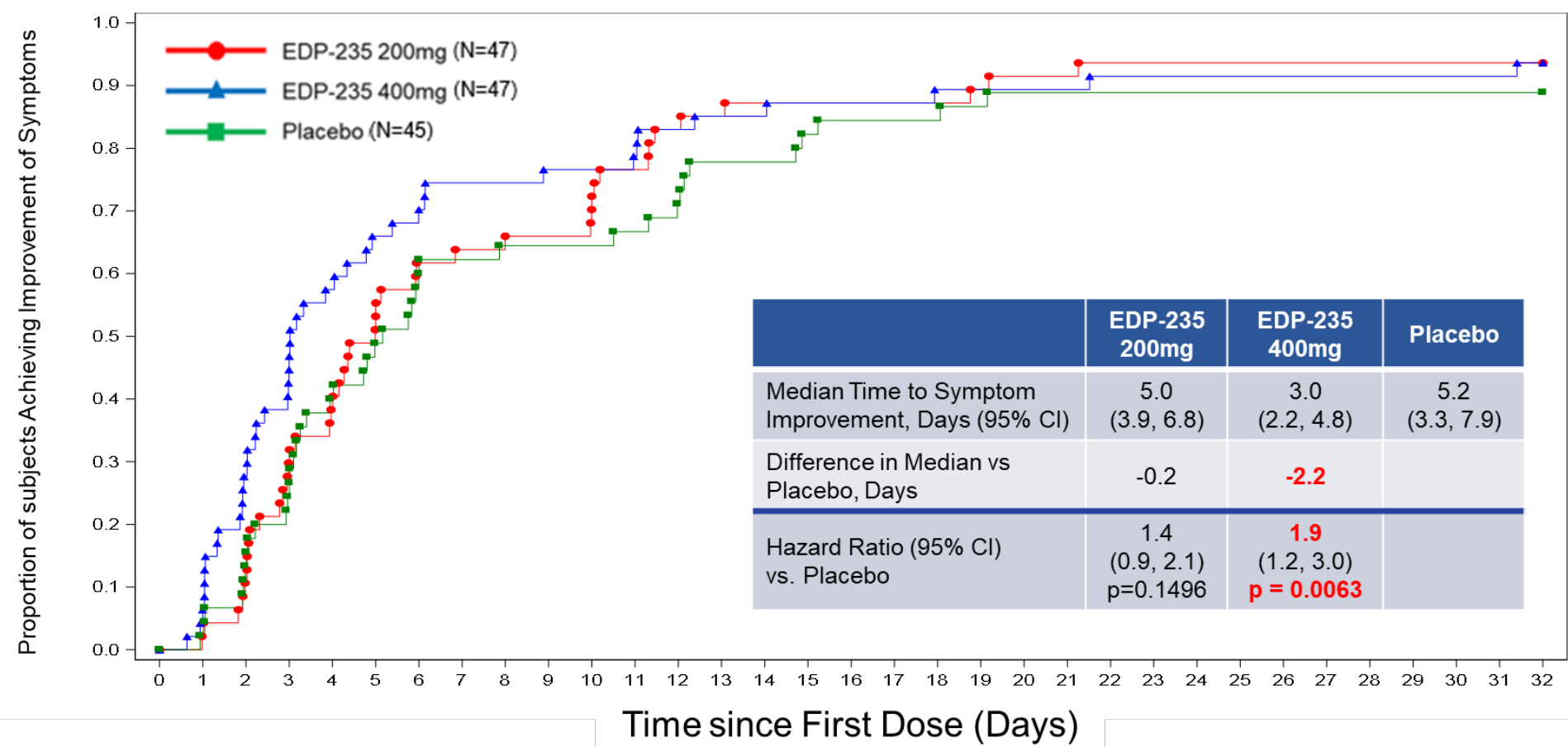
Systemic: Chills or Shivering, Feeling Hot or Feverish, Headache

* Nominal p-value < 0.05

Subtotal Symptom Score: Change from Baseline

(ITT-c population within 3 days of symptom onset; 6 selected symptoms¹)

- EDP-235 400mg significantly reduced duration of 6 symptom subset by 2-days compared to placebo in patients enrolled within 3 days of symptom onset

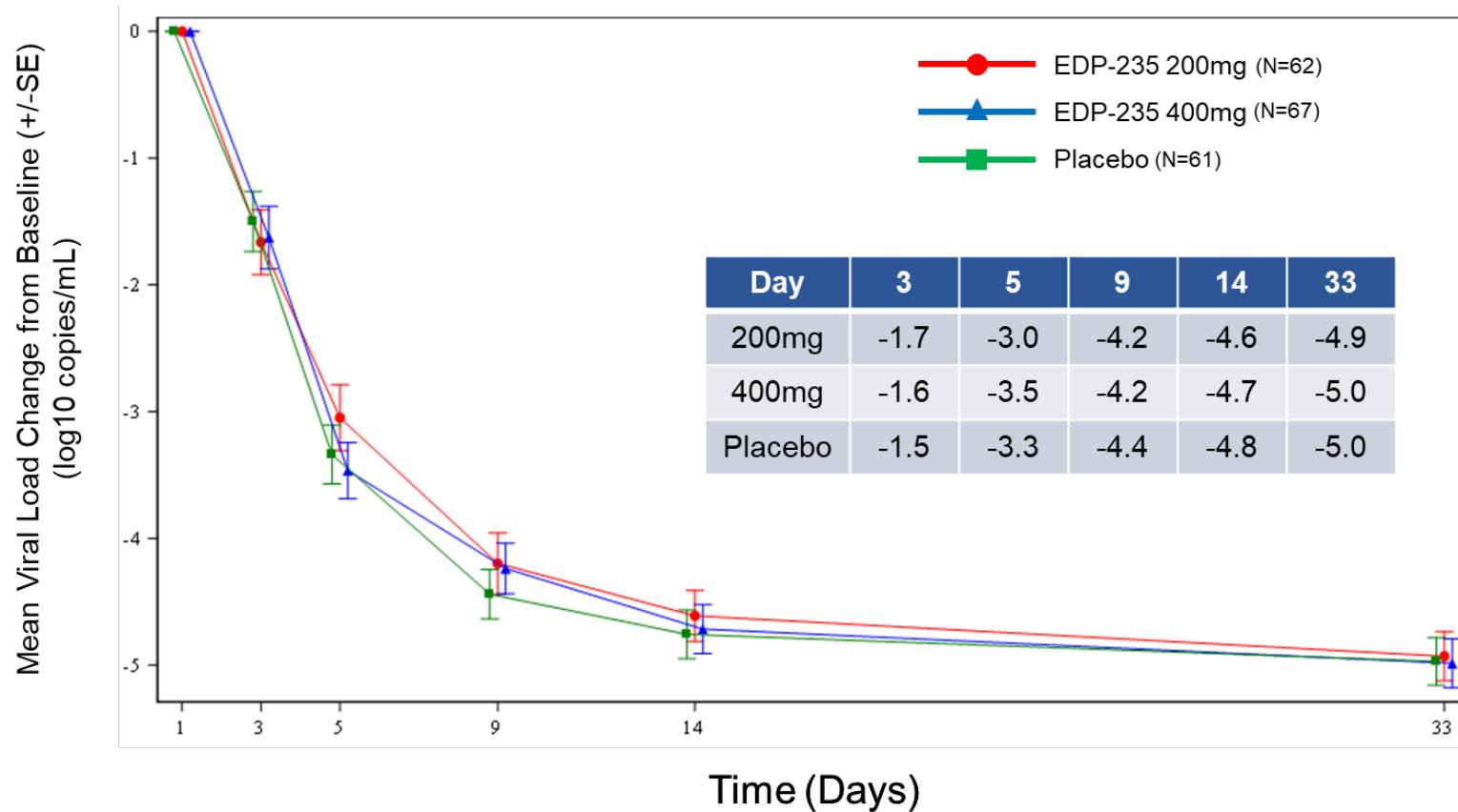


¹COVID-19 Selected Symptoms:
Respiratory: Shortness of Breath, Sore Throat, Stuffy or Runny Nose
Systemic: Chills or Shivering, Feeling Hot or Feverish, Headache

SPRINT: Viral RNA Change from Baseline

Intent-to-Treat-c Population

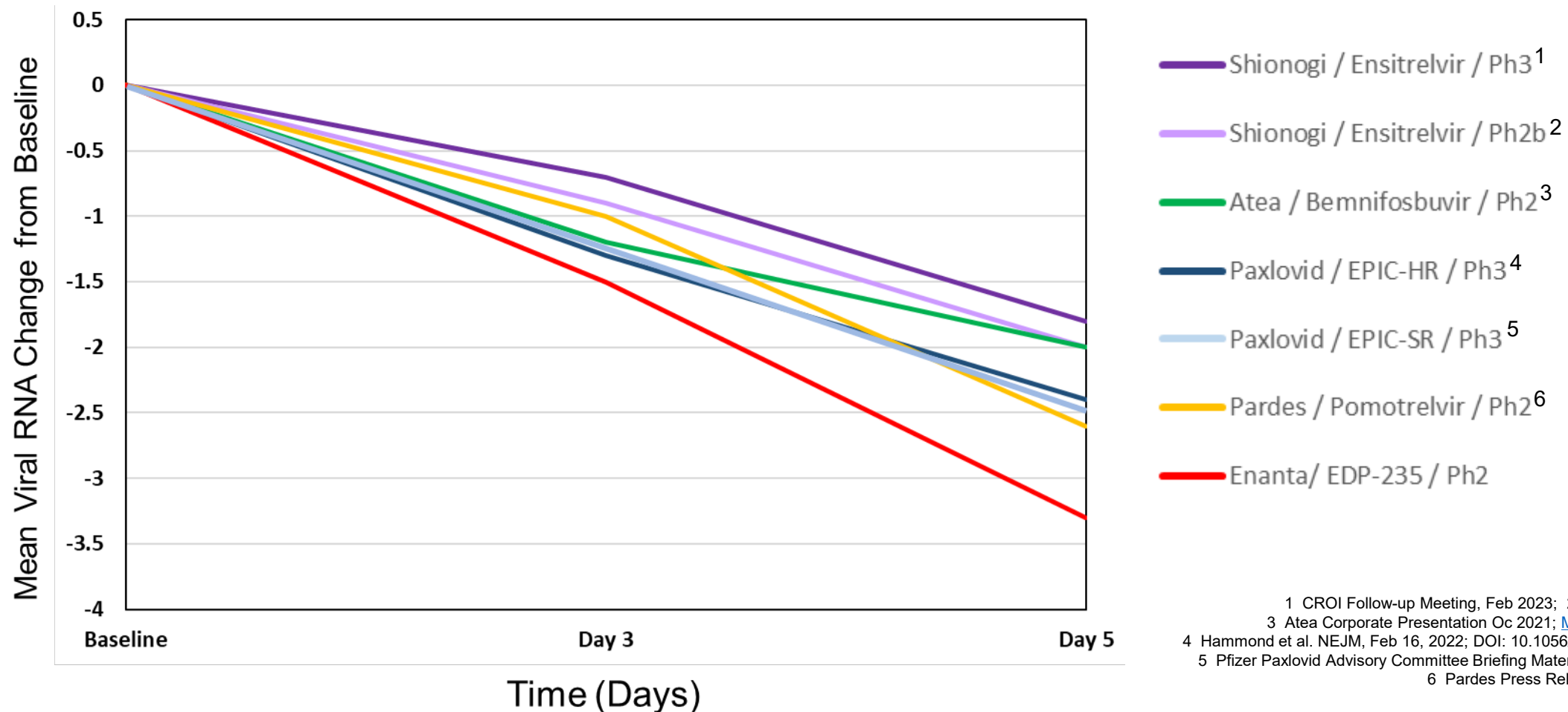
- No difference between treatment arms and placebo for viral RNA decline (ITTc)



- Additional analysis of patients with a baseline viral load greater than 5 log (~50% of patients)
 - Day 3: viral RNA decline of 0.4 log in both EDP-235 groups vs pbo
 - Day 5: viral RNA decline of 0.4 log (400mg) vs pbo

COVID Trial Placebo Arms: Change in Viral RNA from Baseline

- Rapid decline in viral RNA from nasal swabs in placebo arm of SPRINT was more robust than in placebo arms from other trials of antivirals published to date, indicating this highly immune population rapidly cleared virus from the nose



SPRINT Topline Results: Conclusions

Safety

- EDP-235 was generally safe and well tolerated
- Low frequency of adverse events; most were mild in severity
 - 1.3%, 6.4%, and 2.6% in the EDP-235 200mg, 400mg and placebo arms
- No serious adverse events or discontinuations due to adverse events

Clinical Symptoms

- Statistically significant improvement in total symptom score (TSS) achieved at multiple timepoints for EDP-235 400mg
 - Patients enrolled within 3 days of symptom onset showed a statistically significant improvement in TSS for EDP-235 400mg at all time points
- No difference in time to 14 symptom improvement for EDP-235 compared with placebo
 - EDP-235 400mg significantly reduced duration of 6 symptom subset by 2-days compared to placebo in patients enrolled within 3 days of symptom onset

Virology

- No difference between treatment arms and placebo for viral RNA decline
 - Additional analysis of patients with baseline viral load >5 log showed decline of 0.4 log at day 3 with EDP-235 compared to placebo
- Rapid decline in nasal viral RNA observed in all study arms, indicating this is a highly immune population

Reference Slides



Enanta
Pharmaceuticals

Seroprevalence by Natural Infection

CDC US Nationwide Blood Donor Survey

Background

- Seroprevalence: % of a population who have antibodies to an infectious agent
 - Indicates past infection and/or vaccination
- Natural infection produces antibodies to both Nucleocapsid and Spike viral proteins
- Vaccination produces antibodies only to Spike viral protein
- All antibodies are detected for years after vaccination or natural infection
- CDC nationwide blood donor survey provides estimates seroprevalence every 3 months

Conclusions

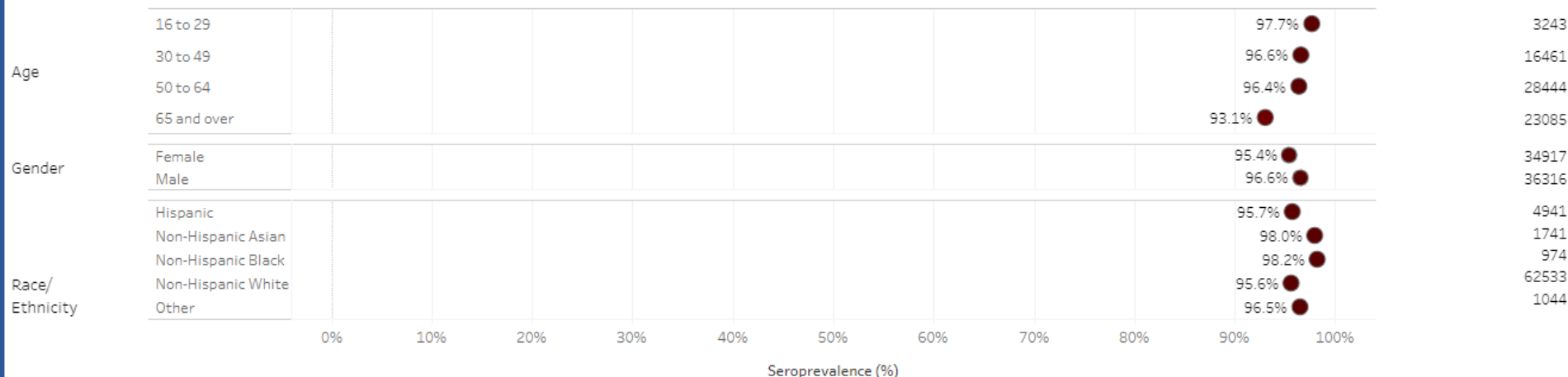
- Most of the people in the US (93-98%) are seropositive for COVID-19 (as of Sept 2022) through either vaccination, natural infection, or both
- Majority of people in the US have been naturally infected with COVID-19 (as of Sept 2022)
- The proportion of the US population with hybrid immunity has grown significantly

Seroprevalence by Natural Infection (Jul – Sep 2022)

CDC US Nationwide Blood Donor Survey

Jul - Sep 2022 U.S. (study-wide) combined seroprevalence estimates by demographic

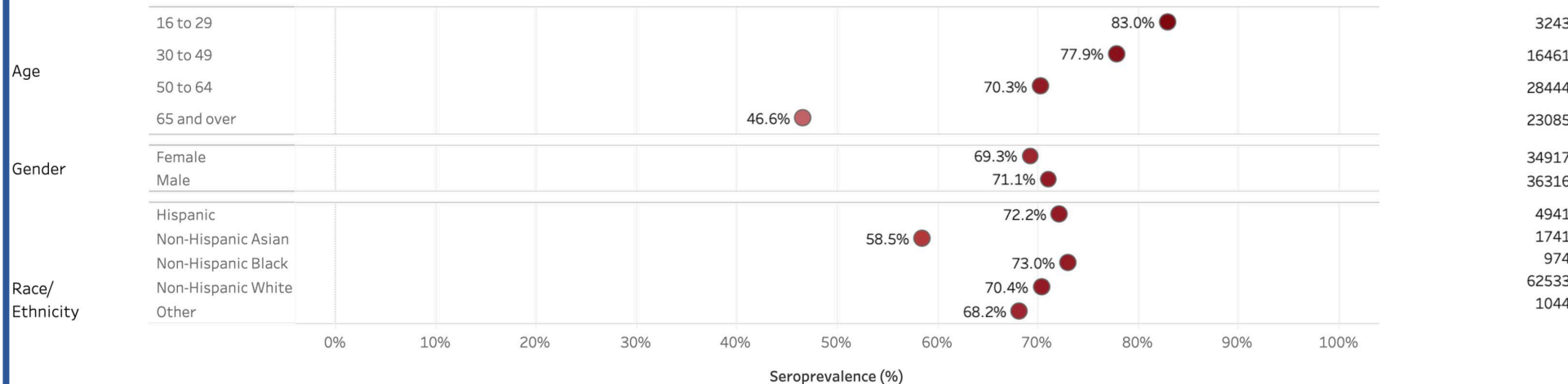
Samples Tested (#)



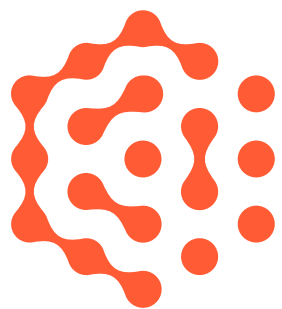
Majority of people in the US are seropositive for COVID-19 (as of Sept 2022) through either vaccination, natural infection, or both.

Jul - Sep 2022 U.S. (study-wide) infection-induced seroprevalence estimates by demographic

Samples Tested (#)



Majority of people in the US have been naturally infected with COVID-19 (as of Sept 2022).



Enanta
Pharmaceuticals

www.enanta.com

